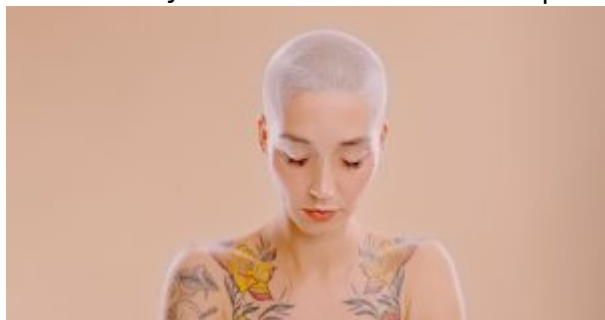


Intelligent Medicine Radio for March 22: Tattoos Linked to Skin Cancer

written by Dr. Ronald Hoffman | March 24, 2025



Intelligent Medicine Radio for March 22, Part 1: Bladder Cancer

The party may be over for telehealth purveyors of cheap copycat weight loss drugs; GLP-1 medications said to offer anti-aging benefits, but a concerning trend points to hair loss in women; Returning astronauts suffer effects of zero gravity, sterile environment; Why supplements can be a logical choice for bladder cancer; Amid new measles concerns, do adults need a booster?

Intelligent Medicine Radio for March 22, Part 2: Tattoos Linked to Skin Cancer

U.S. drops to lowest-ever standings in "World Happiness Report"; Bergamot notches double-digit cholesterol improvements in new study; Benefits of collagen peptides; Addressing post-chemotherapy fatigue; Solutions for knee pain; Tattoos linked to skin cancer, lymphoma risk; High-dose vitamin D slows progression of MS; Advances in AI lead to smart prosthetics, brain control of robot arms for paralytics.

References & Resources

The International Space Station is overly sterile; making it 'dirtier' could improve astronaut health

Cell, 2025; DOI: 10.1016/j.cell.2025.01.039

Do adults need a measles booster?

By Jocelyn Solis-Moreira, MedPage Today March 17, 2025

Hair loss: Another Wegovy side effect?

By Kristren Monaco, MedPage Today, March 17, 2025

Ozempic's new frontier: the war on aging

By Alex Janin, WSJ, March 10, 2025

Sale of Ozempic knockoffs is supposed to end soon. Telehealth companies aren't happy

By Liz Essley Whyte, WSJ, March 10, 2025

Bergamot extract may offer a natural approach to managing cholesterol

By Louisa Richards, Nutra Ingredients, March 4, 2025

Paralyzed man moves robotic arm with his thoughts

By David Nield, Cell March 21, 2025

Robotics and spinal stimulation restore movement in paralysis

By Nicolas Hankov, NeuroRestore, March 12, 2025

2025 World Happiness Report shows US in lowest-ever spot on list

CBS News

Tattoo ink exposure is associated with lymphoma and skin cancers—a Danish study of twins

BMC Public Health. 2025 Jan 15;25(1):170. doi: 10.1186/s12889-025-21413-3

High-dose vitamin D in clinically isolated syndrome typical of multiple sclerosis

JAMA. Published online March 10, 2025. doi:10.1001/jama.2025.1604